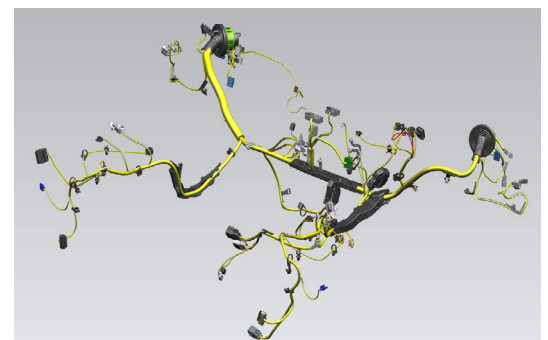


COLLABORATIVE WIRING SCHEMATIC DESIGN AND SIMULATION

Arcadia MCAD Gateway allows Bi-Directional Integration with popular MCAD software such as PTC CREO, Dassault Catia V5 & V6, Dassault Solidworks, Siemens NX and SolidEdge.

As well as MCAD native interchange formats for wire connectivity Arcadia MCAD Gateway also supports industry standard formats such as KBL 2.3/2.4 allowing import of 3D Harness data to a flattened 2D manufacturing drawing in Arcadia Harness



ARCADIA MCAD GATEWAY



FEATURES

Export Arcadia Schematic Connectivity to MCAD

Import Harness Layout from 3D MCAD

Update 2D Manufacturing Drawing for MCAD Changes

Export wire bend and Diameter Information

Import Connector Part Numbers from MCAD

Import Clip Parts and Locations

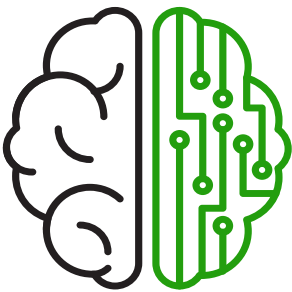
MCAD TO ARCADIA HARNESS IMPORT

3D Geometry in MCAD can be imported and flattened into an Arcadia Harness manufacturing drawing allowing accurate transfer of all harness geometry, clipping points, connector part numbers and coverings. Save the hours it would take to draw these manually and avoid human error introducing risk to your harness build.

ARCADIA SCHEMATIC TO MCAD WIRE EXPORT

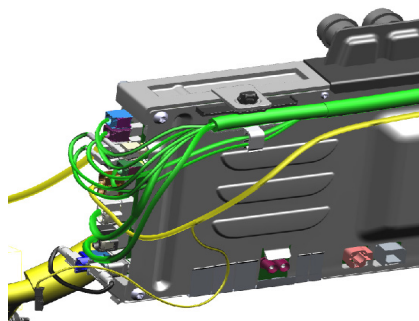
Export Arcadia Schematic wire connectivity directly to your choice of MCAD, this can also be done from Arcadia Harness giving flexibility to your preferred processes.

ADVANCED FEATURES



Schematic Wirelist Export

Arcadia Schematic data can be exported in MCAD XML formats or standard interchange formats such as CREO NWF format. This allows you to show bundle diameters and bend radii in MCAD even before the 2D Harness Drawing is created.



Sync 3D Harness Geometry

Arcadia MCAD Gateway Will allow length changes and adjustments to be updated on existing Harness drawings. This allows Arcadia to easily integrate into the design lifecycle of the product.



Full System Connectivity

Connectivity can be exported from Schematic for ALL of the machine or be filtered by "Harness Tag" allowing easy split up by physical harness. Arcadia MCAD Gateway also integrates seamlessly with platformArchitect.